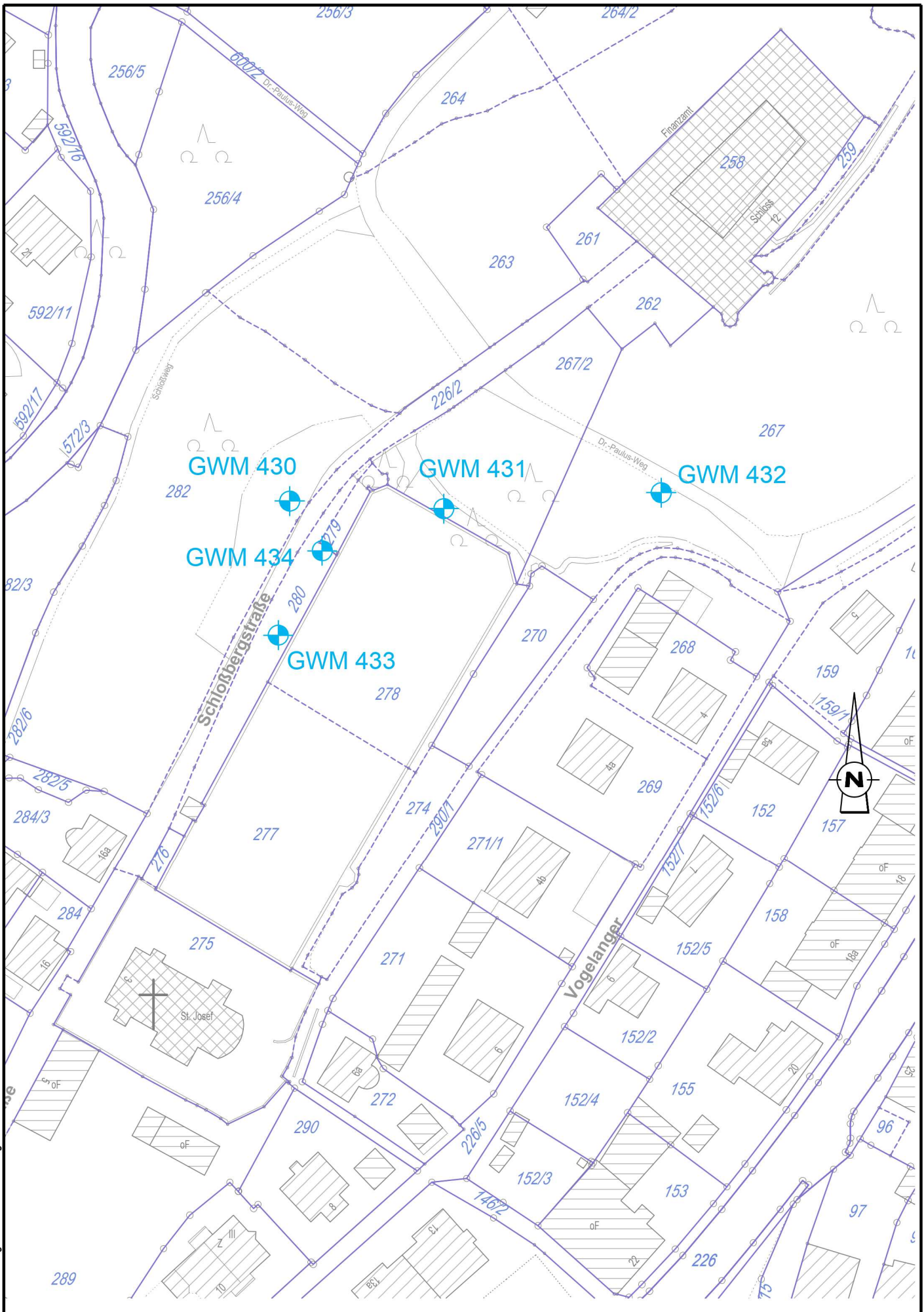




K:\E11712\p4\Flurr\_Baugrunderkund.dwg 26.08.2019



-  Vertikalbohrung
-  Schrägbohrung

|  |                      |
|--|----------------------|
|  <b>EDR GmbH</b><br>Dillwäckerstraße 5 · 80686 München · Tel. (089) 547112-0 · Fax. (089) 547112-50 |                      |
| Grundwassermessstellen<br>Pannenbucht 3/4  | 26.08.2019<br>1:1000 |